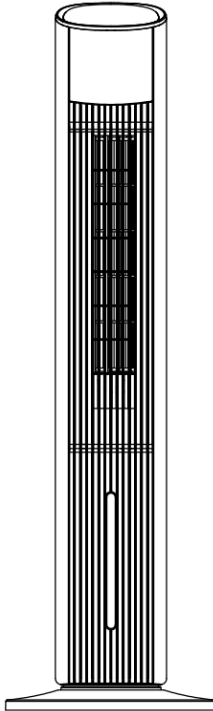


Rohnson[®]

R-8803



**R- 8803 Tower Fan with cooling
220-240V~50-60Hz 60W**

Thank you for buying a Rohnson Tower Fan.



Warning!

According to instruction: EN 60335-2-98:2003/A11:2019:

- Be aware that high humidity levels may encourage the growth of biological organisms in the environment.
- Do not permit the area around the Air Cooler to become damp or wet. If dampness occurs, turn the output of the Air Cooler down. If the Air Cooler output volume cannot be turned down, use the Air Cooler intermittently. Do not allow absorbent materials, such as carpeting, curtains, drapes, or tablecloths, to become damp.
- Unplug the appliance during filling and cleaning.
- Never leave water in the reservoir when the appliance is not in use.
- Empty and clean the Air Cooler before storage. Clean the Air Cooler before next use.

READ CAREFULLY BEFORE ATTEMPTING TO ASSEMBLE, INSTALL, OPERATE OR MAINTAIN THE PRODUCT DESCRIBED. PROTECT YOURSELF AND OTHER BY OBSERVING ALL SAFETY INFORMATION. FAILURE TO COMPLY WITH INSTRUCTIONS COULD RESULT IN PERSONAL INJURY AND/OR PROPERTY DAMAGE!

IMPORTANT SAFETY INFORMATION

1. Read all instructions carefully before using the FAN.
2. Use this FAN only as described in this manual. Any other use not recommended by the manufacturer may cause fire, electrical shock, or injury to persons.
3. Remove the package and ensure that the FAN is undamaged. In case of doubt do not use FAN and contact with your supplier.
4. Do not let children play parts of package.
5. Before use the FAN, check if the voltage marked on the rating label corresponds to the mains in your home.
6. Extreme caution is necessary when the FAN is used by or near children or Invalids and whenever the FAN is left operating unattended.

7. Avoid using extension cord as the extension cord may overheat and cause a risk of fire.
8. Do not pull the power cord to disconnect with power source. Always grasp the plug to pull out.
9. Do not insert any objects into the FAN as it may cause an electric shock or injure or damage to the FAN. Do not block or tamper with the FAN in any manner while it is in operation.
10. Do not leave the FAN unattended. Always unplug FAN when not in use.
11. This FAN is not intended for use in wet or damp locations. Never locate a FAN where it may fall into a bathtub or other water container.
12. Do not use FAN outdoors.
13. Disconnect the fan from the mains power when not in use, and before servicing or performing any maintenance.

WARNING :	The Main Power Switch and the On/Off switch should not be used as the sole means of disconnecting power. Always unplug the power cord before servicing or moving the unit.
------------------	---

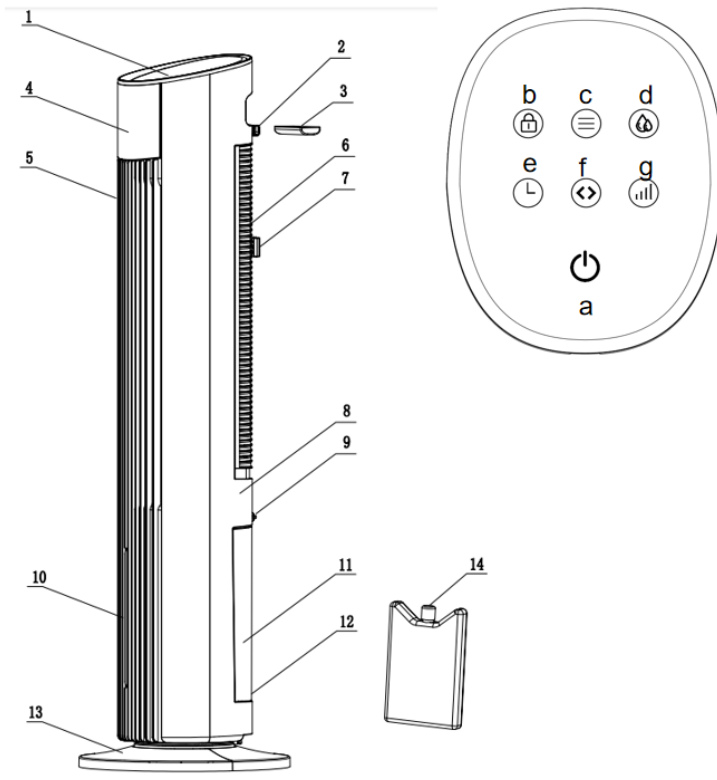
14. Keep the fan clean and maintain in good condition (use an authorized service agent).Unplug the appliance during filling and cleaning.
15. Use recommended parts only (non genuine parts may be dangerous, and will invalidate your warranty).
16. When not in use store in a safe, dry, childproof location.
17. This appliance can be used by Children aged from 8 years and above and persons with reduced physical, sensory or mental capabilities or lack of experience and knowledge if they have been given supervision or instruction concerning use of the appliance in a safe way and understand the hazards involved. Children shall not play with the appliance. Cleaning and user maintenance shall not be made by children without supervision.
18. Be aware that high humidity levels may encourage the growth of biological organisms in the environment.
19. Do not permit the area around the appliance to become damp or wet. If dampness occurs, turn the output of the appliance down. If the appliance output volume cannot be turned down, use the appliance intermittently. Do not allow absorbent materials, such as carpeting, curtains, drapes,or tablecloths,

to become damp.

20. Empty and clean the appliance before storage. Clean the appliance before next use.
21. The back housing shall not dismantle, removal will be dangerous .
22. This appliance is not intended for use by persons (including children) with reduced physical, sensory or mental capabilities, or lack of experience and knowledge, unless they have been given supervision or instruction concerning use of the appliance by a person responsible for their safety.
23. Children should be supervised to ensure that they do not play with appliance.

WARNING : To avoid danger of electric shock, unplug from outlet when not in use and before cleaning. If the supply cord is damaged, it must be replaced by the manufactory or it's service agent or a similarity qualified person in order to avoid a hazard.

CONTROLS AND COMPONENTS

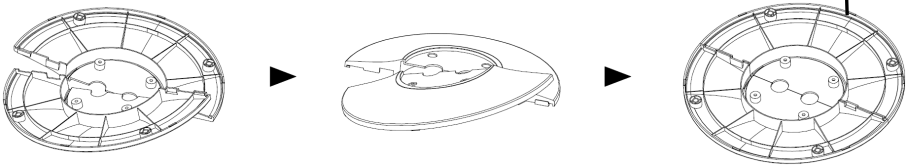


1: Control panel:

a: Power on/off button b: Child lock button c: Mode button d: Cooling button
e: Timer button f: Oscillation button g: Speed button

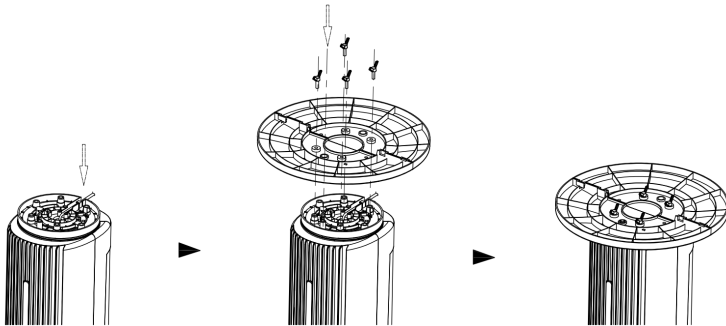
ASSEMBLY

1. Take out the two parts of the base from packing box. Then, align the centers of the two parts of the base and place them in a crossed form. Rotate one of the two bases to align its hole site and make it stuck correctly (Fig. 1).



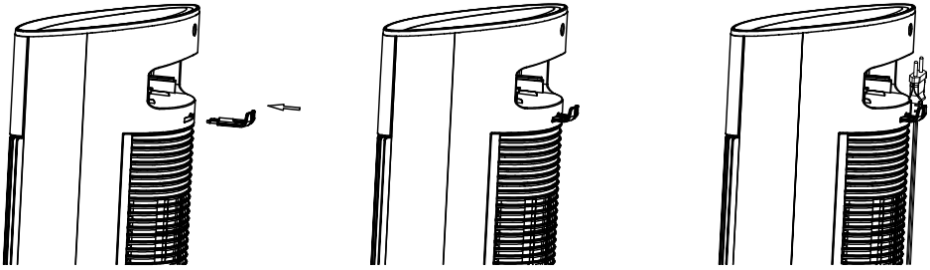
(Fig. 1)

2. Fix the base on the fan body with four screws (included), with a screwdriver, wise it clockwise (Fig. 2).



(Fig. 2)

Cable Hook: Hanging the power cord at cable hook when the fan is not be used.
(Fig. 3)

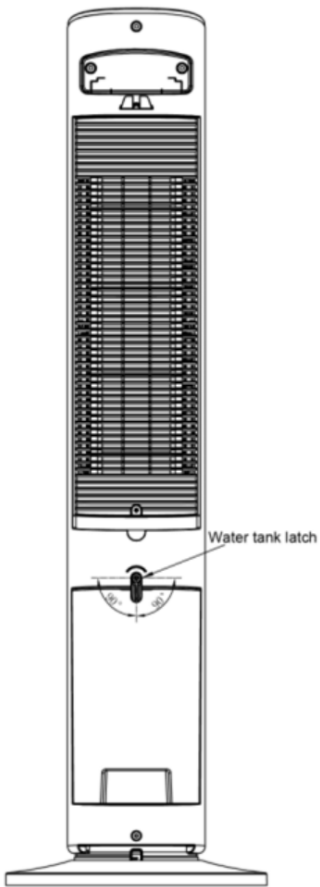


(Fig. 3)

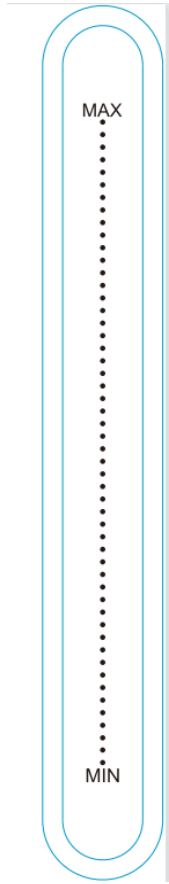
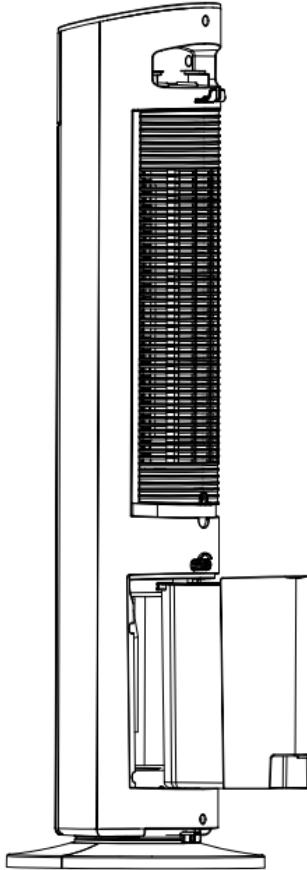
Water filling and water tank clearance

ATTENTION

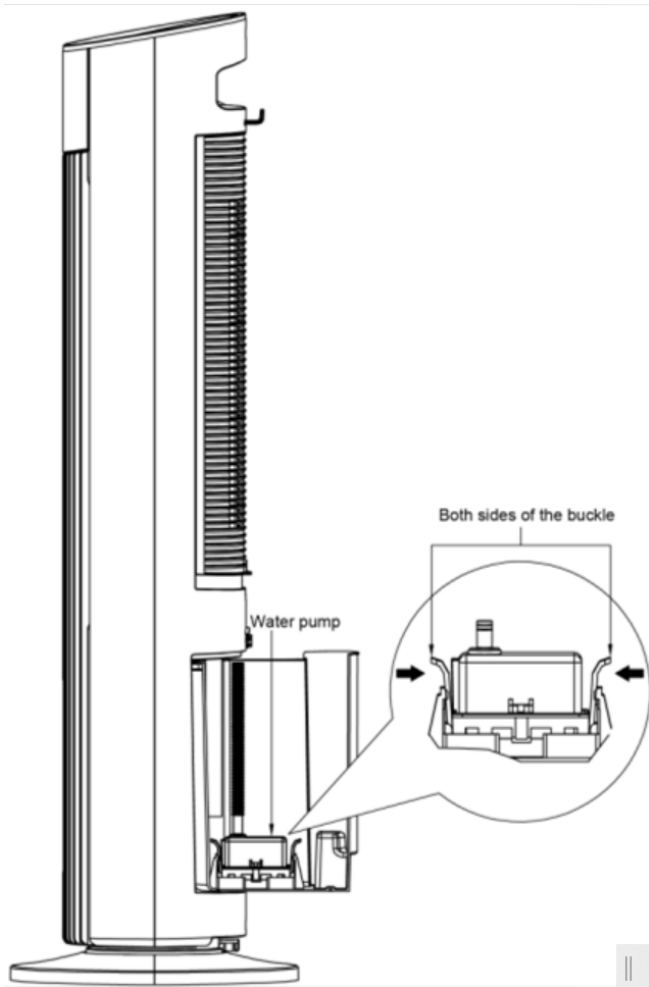
1. Please be sure the plug is taken off when you fill the water or cleaning.
2. Please clean the water that in the water tank when you do not use the product.
3. Turn the water tank latch to right or left at 90 degrees to open the water tank. Then fill the water into the water tank. (Fig. 4).
4. When fill the water, do not exceed 'MAX' level at water scale. At cooling mode, keep the water at least at 'MIN' level. (Fig. 5)
5. Clean Water tank: Pull out the water tank to find water pump, then gently pinch the pressure plate of the water pump, and take out the water pump and clean the water tank directly (Fig. 6)
6. Use the brush or tool to clean the water tank.
7. Don't clean transducer by any metal or stiffness material or scrape it to avoid any damage.
8. Don't put acid, alkalescency, bleacher scour into water tank to avoid damage.
9. Do not spray the water onto control panel and its surrounding, to avoid electrical leakage accidents.
10. Do not open the cover of Ice Box, to avoid its leakage. The Ice Box is environmental protection material that would storage in refrigerator and would use it repeatedly.



(Fig.4)



(Fig.5)

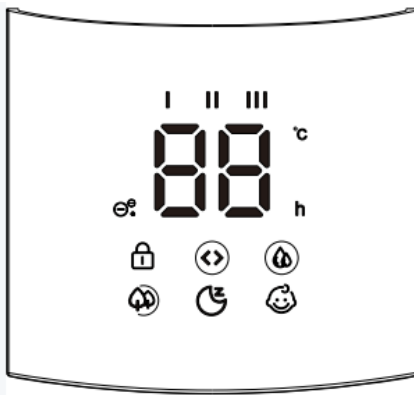
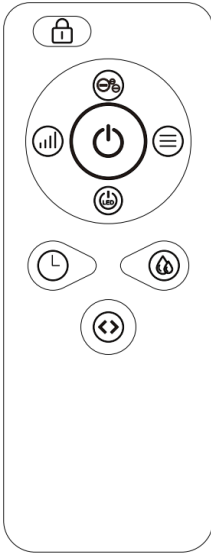
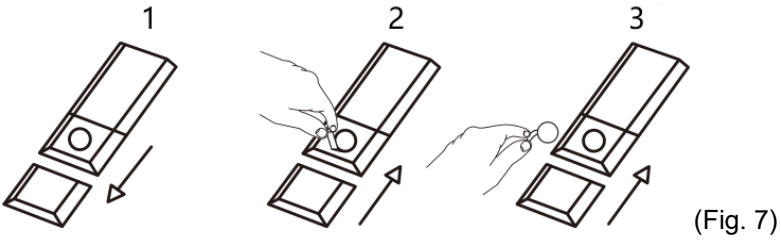


(Fig 6)

REMOTE CONTROL

1. Included a button cell battery (the type of battery CR2025). (Note: Please take out the insulation film under the battery for first time use.)(Fig.7)


The Remote Control Power button is labeled as such (Fig.8). All the functions performed with the Remote-Control work identically to the Manual Controls.







OPERATION

The FAN may be operated by the manual controls located on the FAN or by your remote control (shown in Fig. 8 & 9).


1. Place the FAN on a stable flat surface. Plug the cord set into a **220-240V~** electrical outlet. Plug on the FAN, existing room temperature will be displayed at LED display.


2. **POWER**  : Turn the FAN on by pressing the '**POWER**' button; Turn the FAN off by pressing the '**POWER**' button again.







3. **SPEED**  : You can adjust the fan speed to the desired level: low, medium, or high by pressing '' . The speed setting is displayed on the LED display. (Fig. 10)

4. **MODE**  : Pressing the '' button will set the FAN into **NORMAL**, **NATURAL**, **SLEEP** and **CHILD** mode.

- **NORMAL** Mode: Fan will start work at any speed you set up.

- **NATURAL** Mode  : Fan will start work at low speed(5s)→medium speed(5s)→high speed(5s)→medium speed(5s), it works as per this recycle.


- **SLEEP** Mode  : 1) If you set the fan at high speed, fan will work at high speed at 30 mins, then the fan will transfer to medium speed and work at 30 mins, later the fan transfer to low speed and keep working until the fan stop working. 2) If you set the mode at medium speed, fan will work at medium speed at 30 mins, then the fan will transfer to low speed and keep working until it stop working. 3) If you set the mode at low speed, fan will work at low speed until the fan stop working. The LED display will turn off if you don't control the fan in 30 seconds, touch any button to turn on the display.

- CHILD Mode  : Fan will auto. Set up timer at 3 hours and oscillation function will start. The fan will work at high speed for 15 minutes, and it will transfer to medium speed at 15 minutes, then it will transfer to low speed until it take off. You can take off “oscillation function” manually. The LED display will turn off if you don't control the fan in 30 seconds, touch any button to turn on the display.
5. **TIMER**  : The fan is equipped with a timer that allows you to set its length of operation from **1** hour to **12** hours. The LED display will turn off if you don't control the fan in 30 seconds, touch any button to turn on the display.
6. **OSCILLATION**  : Pressing the ‘’, button will start and stop the oscillation function. The symbol is displayed on the LED display.
7. **COOLING**  : Press ‘’, button to turn on the cold air function. Press button again to turn off. If you want to operate the unit with water for better cooling, pull out the water tank and fill it up to the MAX mark at the most. Take care when doing so, to make sure, that no water enters the product, e.g. through the air inlet.




ATTENTION ABOUT ICE BOX

Then put a ice box in the water tank (the ice box needs to be frozen for more than 3 hours), and the cooling effect is better (Note: when the water tank is short of water, it is forbidden to use, please add water in time).

Do not open the cover of Ice Box, to avoid its leakage. The Ice Box is environmental protection material that would storage in refrigerator and would use it repeatedly.

8. **DISPLAY**  : Can be switched off temporarily by press the LED button on the remote or by pressing and holding the SPEED button on the control panel for more than 3 seconds, the display will light up again once any control button

is activated.

9. Child lock  : press '  ' button to activate the child lock function. All controls cannot be used. Press and hold for 3 seconds to cancel the child lock function and restore normal control.
10. **IONIZER**  : Pressing the 'ION' button on remote control or pressing the MODE button on the control panel for more than 3 seconds will start and stop the Ionizer function. The 'ION' symbol is displayed on the LED display (FIG.10).

WARNING of Low water: when turn on the fan in cooling condition, and the water at low scale, the alarm will sound 3 times, Cooling Icon will flash. And Cooling function stop working. It's need fill water and reset cooling function.

MAINTENANCE

- Always switch off and unplug the appliance before cleaning.
 - Wipe the surface of the fan with a dry cloth, if necessary, use a cloth moistened with a neutral detergent solution and dry the device thoroughly before using it again.
 - Regularly clean the blinds of the device from dust with a damp cloth and dry well. Make sure that no water gets inside the device.
 - Clean the water tank regularly with a soft brush. To drain the water, remove the safety lock on the water tank and pull it out. Press in on the 2 water pump safety clips to completely remove the tank and slide out, see Fig 6.
 - Do not use aggressive or abrasive cleaners to avoid damage to the device.
 - If you do not use the device for a long time, empty the water tank, clean it and store the device in its original packaging in a dry place.
 - If you do not use the remote control for a long time, remove the batteries.



IMPORTANT INFORMATION FOR CORRECT DISPOSAL OF THE PRODUCT IN ACCORDANCE WITH EC DIRECTIVE 2002/96/EC.

At the end of its working life, the product must not be disposed of as urban waste. It must be taken to a special local authority differentiated waste collection center or to a dealer providing this service.

Disposing of a household appliance separately avoids possible negative consequences for the environment and health, deriving from inappropriate disposal and enables the constituent materials to be recovered to obtain significant savings in energy and resources. As a reminder of the need to dispose of household appliances separately, the product is marked with a crossed-out wheeled dustbin.