

Rohnson®

INNOVATE FOR LIFE



Thank you for buying a Rohnson cordless stick vacuum cleaner with digital brushless motor (BLDC)



MAMBA Force

** Scan with your phone or QR reader to find out more about your machine

SAFETY INSTRUCTIONS

The vacuum cleaner is specially used for household purpose, please do not use it for commercial or other purposes.

1. Please don't use the vacuum cleaner to suck detergent, kerosene, glass waste, needles, cigarette ash, moisturized dust, sewage, matches, similar articles or any liquid.
2. Please do not use the vacuum cleaner to suck cement, gypsum powder, wall power and similar small particles, or toy, paper filler and other larger objects, which can cause vacuum cleaner clogging, motor burnout and another fault.
3. Please do not use the vacuum cleaner near fire source and other high temperature places.
4. When the vacuum cleaner is used, please pay attention to install HEPA and rolling brush properly before operating the unit.
5. When the vacuum cleaner is used, please note that the suction inlet cannot be clogged and rolling brush cannot be blocked, otherwise motor failure may be caused.
6. Please do not dump or splash water or other liquid into the machine, to avoid short-circuit and burn-out of machine.
7. When cleaning the vacuum cleaner filters, please remove and wash them with water **if recommended by the manufacturer**; when you need to use them, please install the dried filters into the vacuum cleaner. Do not use the wet filters, otherwise it may burn out the machine due to the short-circuit.
8. Please use dry cloth for cleaning vacuum cleaner, do not use gasoline, banana oil etc. otherwise shell cracking or fading will be caused. Please do not use and store the machine in extremely adverse conditions, such as extreme temperature. Use the vacuum cleaner in room temperature of 5°C~ 40°C. Please store it in a cool and dry place. Sunlight exposure for long time should be prohibited.
9. Make sure that the mains voltage matches the voltage stated on the rating label of the appliance and that the outlet is grounded.
10. Do not use the device if it has been dropped or if there are any visible signs of damage.
11. Do not try to repair the appliance by yourself. Contact our official technical support service.
12. Do not use any accessory that has not been recommended by the manufacturer, as they might cause injuries or damage.
13. Turn off and unplug the appliance from the mains supply when it is not going to be used for a long period of time, before cleaning or repairing, before attaching components and before removing the battery.
14. Never modify the charger in any way.
15. Do not use any battery that has not been provided with the original product.
16. The appliance is not intended to be used by children under the age of 12. It can be used by children over the age of 12, as long as they are given continuous supervision.
17. This appliance is not intended to be used by persons with reduced physical, sensory or mental capabilities or lack of experience or knowledge unless they have been given supervision or instruction concerning the use of the appliance in a safe way by a person responsible for their safety and understand the hazards involved.
18. Supervise young children to make sure that they do not play with the appliance. Close supervision is necessary when the appliance is being used by or near children.

BATTERY INSTRUCTIONS

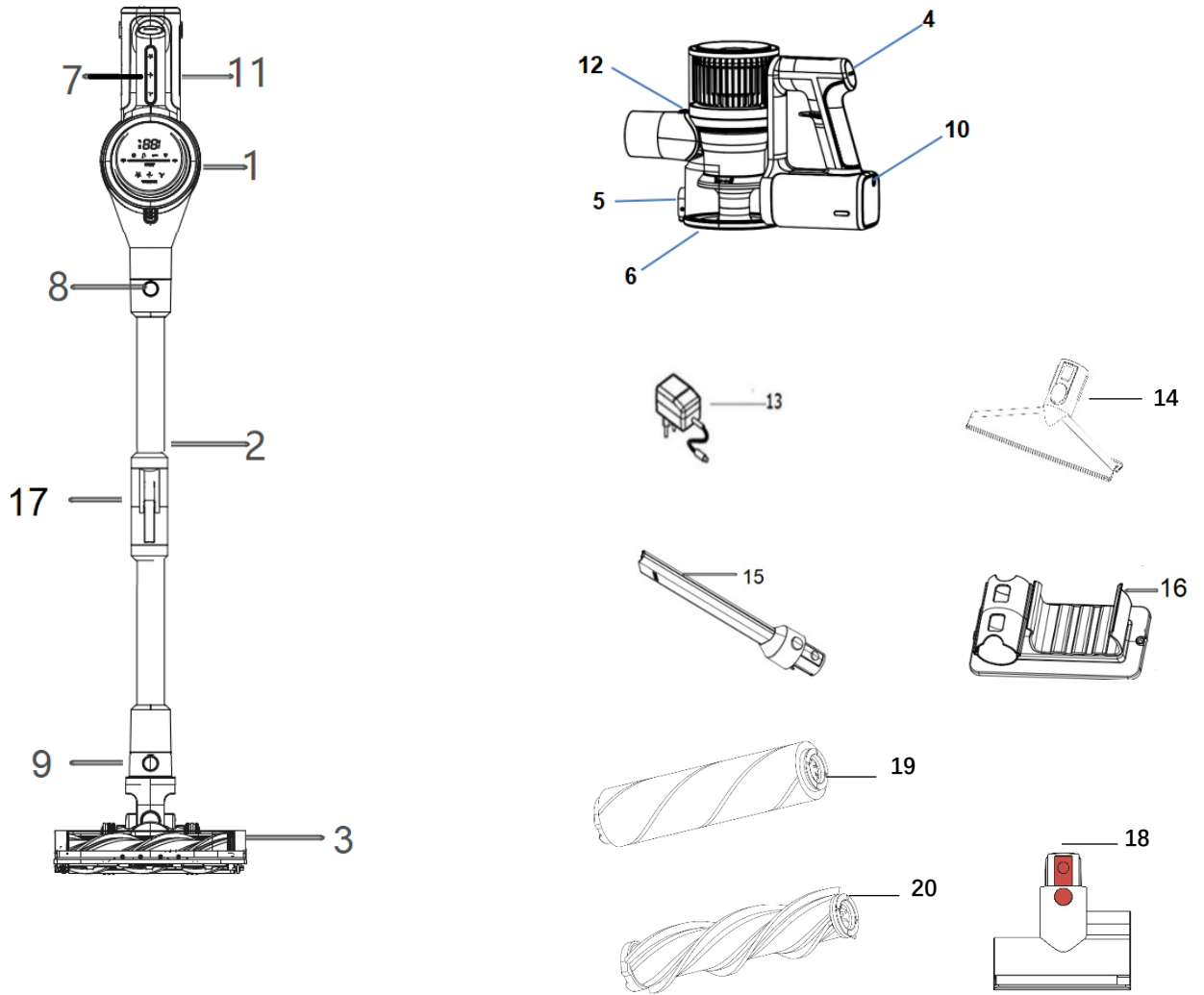
-This appliance includes Li-ion batteries, do not incinerate or expose them to high temperature, as they may explode.

-Leaks from the battery or battery cells can occur under extreme conditions. Do not touch any liquid that leaks from the battery. If the liquid gets into contact with skin, wash immediately with soap and water. If the liquid gets into the eyes, flush them immediately with clean water for a minimum of 10 minutes and seek medical attention. Wear gloves to handle the battery and dispose of immediately in accordance with local regulations.

-Avoid contact between the battery and small metallic objects such as paper clips, coins, keys, nails or screws.

-Before a new battery is used or the battery is used for the first time after long-term storage, fully charge the battery. When the device is stored and not used for long periods of time, ensure that the battery pack is fully charged and ensure that the battery is charged and discharged at least once every three months.

PRODUCT COMPONENTS



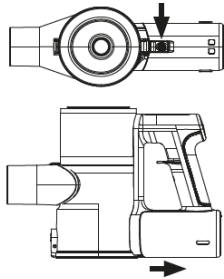
- 1.Cordless vacuum cleaner main unit
- 2.Metal tube
- 3.Motorized floor brush
- 4.On/off button
- 5.Bottom cover release button
- 6.Removeable dust cup
- 7.Touch pad of Speed control
- 8.Conductive aluminum tube release button
- 9.Floor brush release button

- 10.Charge port
- 11.Battery pack
- 12.Dust cup release button
- 13.Adapter
- 14.Sofa accessory
- 15.Long nozzle
- 16.Wall mount
- 17.Foldable button
- 18.Mini motorized brush
- 19.Soft roller
- 20.Bristle roller

CHARGING THE BATTERY

The battery can be left on the handset for charging or removed. Make sure the appliance is switched off before charging.

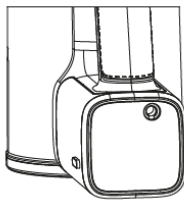
Removing/inserting the battery



- Release the latch on the underside.
- Pull the battery away from the handset.
- Push the battery back onto the guide until it audibly clicks into place.

Option 1: Charging in the handset

1. Insert the mains plug into the charging socket on the back of the handset. Open the small protective cover beforehand.



2. Connect the mains adaptor to a functioning socket.
3. The LEDs on the top of the handset indicate the charging progress.

Option 2: Charging the battery once removed

1. Insert the mains plug into the charging socket at the back of the battery. Open the small protective cover beforehand.
2. Connect the mains adaptor to a functioning socket.
3. The LED on the inside of the battery will start to flash. When the battery is fully charged, the LED lights up continuously.

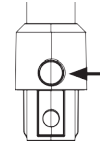


Note: The battery capacity is shown in the display; in addition, the battery symbol flashes green.

The display goes off 30 minutes after the battery has been fully charged.

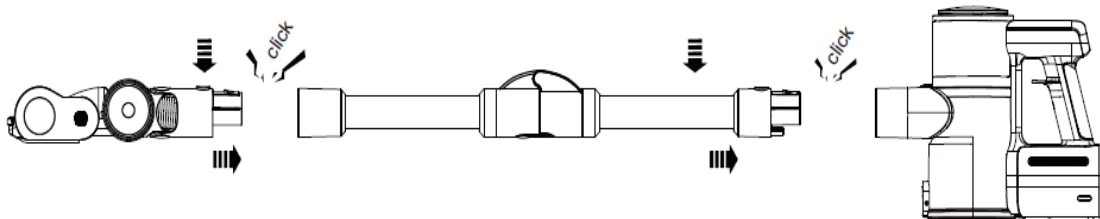
USE OPTIONS

You can either connect the various attachments directly to the hand-held appliance or extend the range using the suction tube. To remove accessories, release the relevant lock.



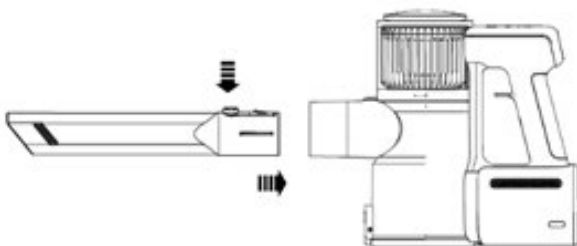
Use as a stick vacuum cleaner

1. Assemble the dust cup onto the main body.
2. Assemble the metal tube and the motorized floor brush. Insert the metal tube into the main body until you hear a "click" and then insert the motorized floor brush into the head of the metal tube until you hear a "click".
3. The conductive aluminum tube can be foldable use, there is a foldable button on the back.
4. The device includes two different rollers that allow cleaning different types of surfaces. The soft roller which is suitable for all types of floors (especially for wooden floors) and the bristle roller which is suitable for carpets. Both of them are interchangeable and are used with the floor power brush for the upright vacuum cleaner.

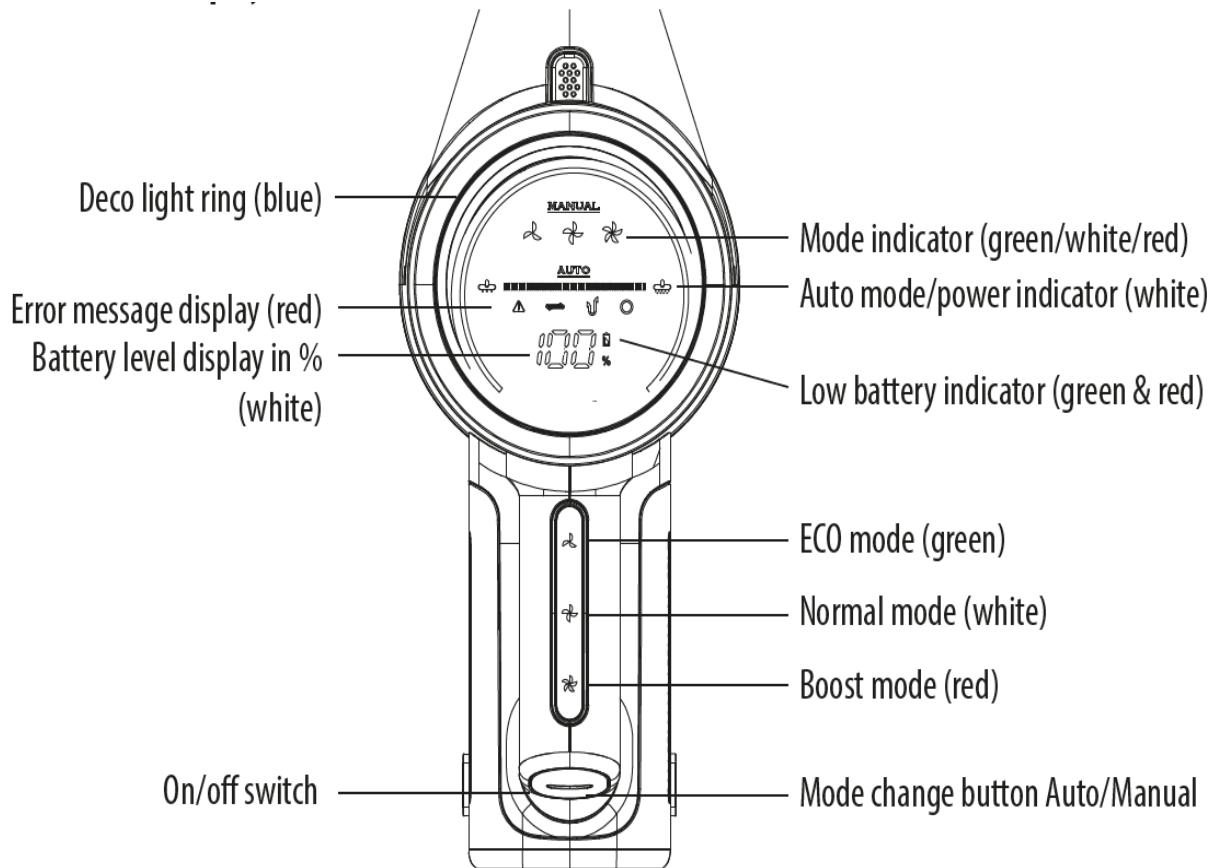


Use as a handheld vacuum cleaner

1. Assemble the dust cup onto the main body.
2. Insert the accessory into the main body until you hear a "click".



DISPLAY DESCRIPTION



The display is shown in full for approx. 1 second when the appliance is switched on. After that, only the active functions are illuminated. The battery status is always displayed.

Battery display

- Capacity is shown in the display.
- If there is less than 20 % remaining capacity, the battery symbol flashes green.
- If there is less than 5 % remaining capacity, the battery symbol flashes red.

Warning symbols

- During use, warning symbols may light up in the display; for their meaning, see the section "Troubleshooting".

Memory function

- The appliance remembers the settings from when it was last switched off. When the appliance is switched on again, it automatically starts with the last setting selected.

OPERATION METHOD

1. To switch on/off, press the lower half of the on/off switch.
2. The appliance starts in manual mode (“MANUAL”) with medium suction strength when it is switched on for the first time.
3. You can choose between the different suction strengths by touching the touch display on the top of the handle. The suction strength selected lights up on the handle and is also shown on the display.
 - a. Green – ECO (runtime up to 55 min)
 - b. White – NORMAL (runtime up to 24 min)
 - c. Red – BOOST (runtime up to 15 min)
4. Press the upper half of the on/off switch (“MODE”) to switch to automatic mode. In this mode, the appliance automatically adjusts the suction power depending on the amount of dirt. The suction strength is shown in the display.



5. Press “MODE” again to switch back to manual mode. Alternatively, click one of the icons on the touchscreen to select desired manual mode.

STORAGE

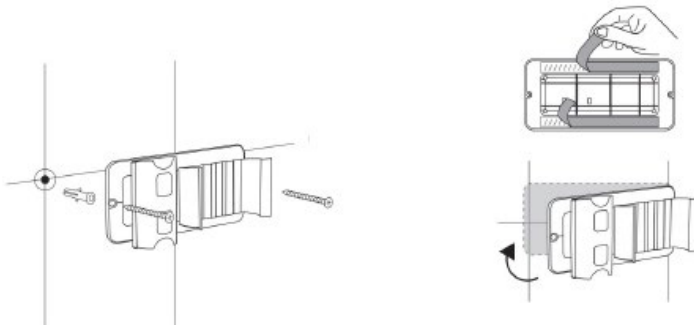
Store the appliance in a dry place and protect it from excessive heat or direct sunlight.

Wall mount

Use the 3M tape or screws.

While use the screws, before drilling, make sure that there are no cables in the wall where.

- Fix the wall bracket to the wall using the screws provided.
- Make sure that it is aligned correctly: the recesses in the large mount must point



- Hook the hand-held appliance into the large attachment from above.

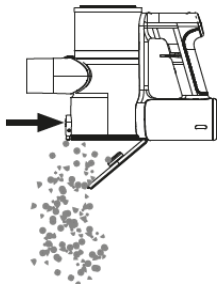
CLEANING AND MAINTENANCE

Switch the appliance off and disconnect it from the mains before cleaning or user maintenance.

Never hold the appliance or accessories under running water or immerse them in water or other liquids.

- Clean the appliance by wiping it with a dry cloth.
- Do not use harsh or abrasive cleaning agents or cleaning pads.
- The accessories can be wiped with a damp cloth if necessary.

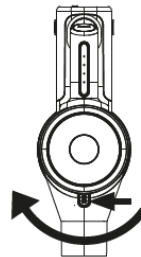
Emptying the dust container



1. Hold the hand-held appliance over a dustbin and release the lock.
2. The flap will open and the dirt will fall out.
3. Close the flap again.

Removing/cleaning the dust container

1. Press the safety catch above the suction opening.
2. Turn the dust container clockwise to release the lock.
3. Removing the dust container.
4. Empty the container and, if necessary, wipe it out with a dry or slightly damp cloth.

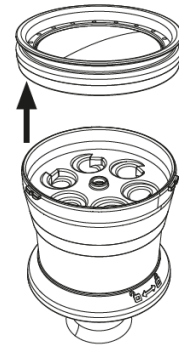


5. When putting the dust container back on, make sure that the lug on the lid is placed in the corresponding recess.
6. Turn the dust container anticlockwise until it audibly clicks into place.

Cleaning the filter

When the filter is blocked due to excessive dust, it must be cleaned and if necessary, it can also be replaced. To ensure maximum efficiency, it is suggested to clean the filter regularly (at least twice a month) and to replace the filter at least once a year. Both cleaning and replacement depend on use. More frequent cleaning may be required when vacuuming fine dust or using the machine intensively.

1. Opening or removing the dust container.
2. Turn the multi-cyclone filter clockwise to release the lock.
3. Remove the multi-cyclone filter.
4. The HEPA filter is located on the top of the multi-cyclone filter.



5. Remove the HEPA filter, tap it out to remove excessive dust and wash with water, if necessary. It's important to wash the filter with cold water only, under a running tap. Repeat washing the filters until clean water runs. Do not immerse into water. Tap the filter to remove any excess water and leave to dry completely. Allow the filters to dry completely in a dry area with good air circulation for at least 24 hours, away from direct sunlight, heat sources like heating appliances etc.

Make sure the filters are completely dry before installing them.

CAUTION:

Do not clean the filters in a washing machine.

Do not use a hair dryer to dry them.

Never use the appliance without filters

6. Clean the multi-cyclone filter with a brush or dry cloth. Rinse with clean water if necessary.

7. Allow to dry completely before reinserting.

8. Insert the HEPA filter into the multi-cyclone filter. Ensure it is correctly positioned. The HEPA filter must be level, and the seal must not be squashed.

9. Insert the multi-cyclone filter into the hand-held appliance and tighten it anticlockwise.

10. Close and replace the dust container.

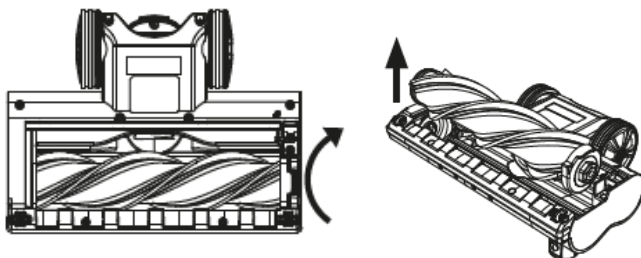


Cleaning the motorized electric brush

1. Wipe the housing with a damp cloth.

2. To remove the brush roller, release the lock and remove the side cover.

3. Remove the brush roller from the side



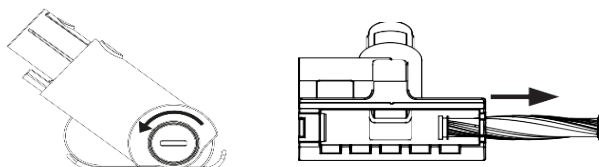
4. Wipe the brush roller or clean it under running water if necessary. Remove hair and other dirt.

5. Allow the brush roller to dry completely.

6. Replace the brush roller and put the side cover back on


Cleaning the motorised mini electric brush:





1. Wipe the housing with a damp cloth.
2. To remove the brush roller, loosen the side lock anticlockwise using a coin and remove the side cover.
3. Pull out the brush roller sideways.
4. Wipe the brush roller or clean it under running water if necessary. Remove hair and other dirt.
5. Allow the brush roller to dry completely.
6. Replace the brush roller, insert the side cover and close it again clockwise using a coin.



TROUBLESHOOTING

Switch off the appliance and disconnect the mains plug before addressing any faults!
Failure to do so may result in injury or electric shock.

Problem	Possible causes	Solution
Appliance is not working	Battery is empty	Charge the battery
	Brush roller is blocked	Clean the brush roller and remove debris such as hair and fibres if necessary.
Battery will not charge	Appliance or charging station is not correctly connected to a power socket	Connect the mains adaptor correctly to a functioning power socket
	Contact with charging station has not been established	Hang the hand-held appliance correctly in the charging station
Suction power decreases	Suction opening on the container is blocked	Clean the suction opening on the hand-held appliance and check the suction tube for any dirt.
	Dust container is full	Empty the dust container
	Filters are dirty	Clean the filters, replace the HEPA filter if necessary
	Brush roller is blocked	Clean the brush roller and remove debris such as hair and fibres if necessary.
Filter cannot be inserted correctly	Filter not fitting properly in slot	Check filter and fitting are correct
 flashes red	Incorrect mains adaptor	Only use the original mains adaptor or a mains adaptor with identical specifications

Problem	Possible causes	Solution
	Brush roller not inserted correctly/blocked	Check that the brush roller is correctly fitted and remove any blockages/dirt
	Suction blocked	Check the brush rollers, suction tube and suction opening for dirt/blockages
	Air flow blocked Filter blocked	Clean the filter
 Both indicators flashing	Appliance is overheating	Leave to cool down

EN

TECHNICAL SPECIFICATIONS:

MODEL: Rohson mamba force M9

BATTERY: Li-Ion 29,6V 2200mAh, 8 battery cells

POWER: 415W

DIGITAL MOTOR (BLDC motor)



IMPORTANT INFORMATION FOR CORRECT DISPOSAL OF THE PRODUCT IN ACCORDANCE WITH EC DIRECTIVE 2002/96/EC.

At the end of its working life, the product must not be disposed of as urban waste. It must be taken to a special local authority differentiated waste collection center or to a dealer providing this service. Disposing of a household appliance separately avoids possible negative consequences for the environment and health, deriving from inappropriate disposal and enables the constituent materials to be recovered to obtain significant savings in energy and resources. As a reminder of the need to dispose of household appliances separately, the product is marked with a crossed-out wheeled dustbin.